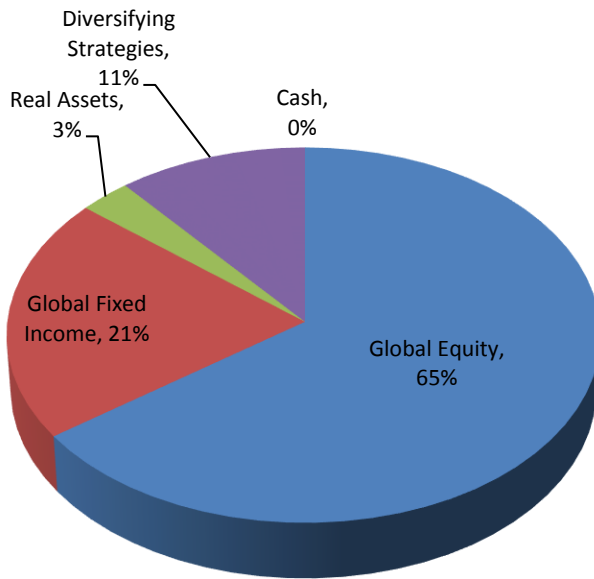
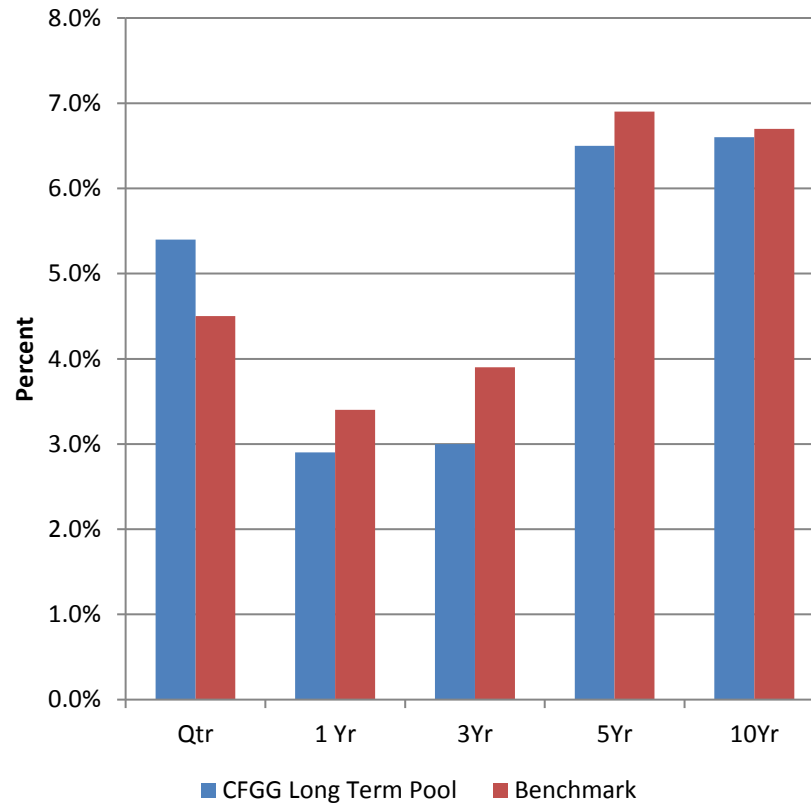


Asset Allocation



Performance



Note: Global Equity is comprised of 33% U.S. equity, 25% international equity, 6% hedged equity, and 1% private equity.

Benchmark is comprised of indices representing the current asset allocation strategy of the CFGG Long Term Pool.

Community Foundation of Greater Greensboro

Summary of Investment Performance

Report for Periods Ending September 30, 2020

	Annualized							Since Inception	Date
	Qtr	YTD	1Yr	3Yr	5Yr	7Yr	10Yr		
<u>Long Term Pool</u>	5.4%	-2.9%	2.9%	3.0%	6.5%	5.1%	6.6%	7.0%	9/94
Target Weighted Index (Benchmark) ¹	4.5	-2.6	3.4	3.9	6.9	5.3	6.7	7.4	
Market Weighted Index (Benchmark) ²	5.1	-1.1	4.4	3.8	6.8	5.4	6.8	7.4	
<u>Global Equity Composite</u>	7.1	-2.4	6.5	4.1	8.5	6.8	8.4	6.4	9/98
MSCI AC World Index	8.1	1.4	10.4	7.1	10.3	7.8	8.5	6.2	
<u>Domestic Equity Composite</u>	8.6	1.8	11.6	9.0	11.8	10.6	12.4	6.8	1/99
Balanced Index II ³	7.4	-0.1	8.9	8.1	11.5	10.2	12.3	6.2	
iShares S&P 100 Index	9.7	9.5	20.7	14.0	15.2	13.3	14.0	8.7	1/07
S&P 100 Index	9.8	9.8	21.0	14.3	15.4	13.5	14.2	8.9	
Vanguard Institutional Index Fund	8.9	5.6	15.1	12.3	14.1	12.7	13.7	6.6	1/99
S&P 500 Index	8.9	5.6	15.1	12.3	14.1	12.7	13.7	6.6	
Vanguard Mid Cap Index Fund	7.9	0.2	7.1	8.0	10.3	9.8	-	12.2	11/12
Spliced Vanguard Mid Cap Fund Index	8.0	0.2	7.1	8.0	10.4	9.9	-	12.2	
Harbor Small Cap Growth Fund	11.0	11.7	26.4	14.9	14.5	12.2	13.5	10.7	7/03
Russell 2000 Growth Index	7.2	3.9	15.7	8.2	11.4	9.2	12.3	9.7	
Russell 2000 Index	4.9	-8.7	0.4	1.8	8.0	6.4	9.9	8.4	
DFA Small Cap Value Fund	3.4	-22.9	-15.9	-7.3	1.6	1.8	6.8	4.1	9/06
Russell 2000 Value Index	2.6	-21.5	-14.9	-5.1	4.1	3.3	7.1	4.3	
Russell 2000 Index	4.9	-8.7	0.4	1.8	8.0	6.4	9.9	6.8	

Community Foundation of Greater Greensboro

Summary of Investment Performance

Report for Periods Ending September 30, 2020

	Annualized							Since Inception	Date
	Qtr	YTD	1Yr	3Yr	5Yr	7Yr	10Yr		
<u>International Equity Composite</u>	5.5%	-9.1%	-0.7%	-1.7%	5.1%	2.3%	3.3%	5.2%	9/98
Blended Index ⁴	6.3	-5.4	3.0	1.2	6.2	3.2	4.0	5.0	
EuroPacific Growth Fund	9.6	4.3	14.8	5.7	9.1	6.6	6.7	7.4	3/04
MSCI EAFE Growth Index	8.4	4.6	13.4	7.1	9.2	6.2	7.0	6.3	
MSCI EAFE Index	4.8	-7.1	0.5	0.6	5.3	3.0	4.6	4.8	
Dodge & Cox International Stock Fund	0.4	-18.1	-9.4	-5.9	2.2	-	-	-0.3	12/14
MSCI AC World Index ex-U.S.	6.3	-5.4	3.0	1.2	6.2	-	-	3.8	
MSCI EAFE Value Index	1.2	-18.3	-11.9	-5.9	1.1	-	-	-0.5	
Tweedy Browne Global Value Fund	0.1	-13.5	-10.8	-1.6	3.0	-	-	1.0	4/15
MSCI EAFE Hedged Index	1.3	-8.4	-3.1	2.6	6.5	-	-	3.6	
MSCI EAFE Value Index	1.2	-18.3	-11.9	-5.9	1.1	-	-	-2.0	
DFA International Small Cap Value	6.3	-15.9	-5.9	-6.8	2.3	2.0	4.8	5.0	6/05
MSCI Small Cap EAFE Index	10.3	-4.2	6.8	1.4	7.4	5.7	7.3	6.2	
MSCI ACWI ex-U.S. Small Cap Index	10.5	-3.6	7.0	0.9	6.8	4.5	5.3	6.3	
Brown International Small Company Fund	11.4	-	-	-	-	-	-	15.3	5/20
MSCI Small Cap EAFE Index	10.3	-	-	-	-	-	-	11.8	
MSCI ACWI ex-U.S. Small Cap Index	10.5	-	-	-	-	-	-	14.1	
DFA Emerging Markets Value	4.7	-15.1	-6.8	-4.0	5.4	0.4	-0.6	5.9	6/05
MSCI Emerging Markets Index	9.6	-1.2	10.5	2.4	9.0	3.7	2.5	6.9	
MSCI Emerging Markets Value Index	4.7	-14.2	-5.7	-2.9	4.4	-0.1	-0.4	5.3	
Van Eck Emerging Markets Fund	8.3	-	-	-	-	-	-	17.4	5/20
MSCI Emerging Markets Index	9.6	-	-	-	-	-	-	17.6	
MSCI Emerging Markets Growth Index	14.2	-	-	-	-	-	-	24.8	
<u>Hedged Equity Composite</u>	6.1	5.2	11.2	6.1	5.7	5.9	5.5	5.2	9/08
HFRI Fund of Funds Index	4.1	2.4	5.6	2.8	3.1	3.0	2.9	2.6	
HFRI Equity Hedge Index	6.0	2.5	8.3	3.8	5.6	4.5	4.6	4.8	
ABS Global Offshore	2.9	1.1	6.9	3.6	3.9	-	-	3.9	1/14
HFRI Fund of Funds Index	4.1	2.4	5.6	2.8	3.1	-	-	2.7	
MSCI AC World Index	8.1	1.4	10.4	7.1	10.3	-	-	7.8	
Pointer Offshore, Ltd.	7.9	7.5	13.7	7.6	6.8	-	-	7.8	4/14
HFRI Fund of Funds Index	4.1	2.4	5.6	2.8	3.1	-	-	2.8	
MSCI AC World Index	8.1	1.4	10.4	7.1	10.3	-	-	7.1	

Community Foundation of Greater Greensboro

Summary of Investment Performance

Report for Periods Ending September 30, 2020

	Qtr	YTD	1Yr	Annualized				Since Inception	Date
				3Yr	5Yr	7Yr	10Yr		
Private Equity									
RCP Advisors IX	0.0%	-0.1%	4.9%	12.6%	12.9%	-	-	-9.1%	<i>3/14</i>
Fixed Income/Absolute Return Composite	2.6	2.0	3.7	3.3	4.0	3.5	4.1	6.3	<i>9/94</i>
Bloomberg Barclays US Aggregate Index	0.6	6.8	7.0	5.2	4.2	4.0	3.6	5.6	
Global Fixed Income Composite	1.6	2.9	4.0	3.6	4.5	3.8	4.1	6.6	<i>9/94</i>
Bloomberg Barclays US Aggregate Index	0.6	6.8	7.0	5.2	4.2	4.0	3.6	5.6	
Bloomberg Barclays Global Agg Index	2.7	5.7	6.2	4.1	3.9	2.5	2.4	5.0	
Dolan McEniry	2.0	4.9	-	-	-	-	-	4.9	<i>12/19</i>
Bloomberg Barclays US Aggregate Index	0.6	6.8	-	-	-	-	-	6.8	
DoubleLine Total Return Bond Fund	1.0	3.7	3.5	3.8	3.3	-	-	3.4	<i>10/14</i>
Bloomberg Barclays US Aggregate Index	0.6	6.8	7.0	5.2	4.2	-	-	3.9	
Dodge & Cox Income Fund	1.5	6.8	7.7	5.5	5.2	-	-	4.3	<i>10/14</i>
Bloomberg Barclays US Aggregate Index	0.6	6.8	7.0	5.2	4.2	-	-	3.9	
Loomis Sayles Bond Fund	2.9	-3.0	-0.7	1.7	4.0	3.0	4.4	7.2	<i>4/09</i>
Bloomberg Barclays US Aggregate Index	0.6	6.8	7.0	5.2	4.2	4.0	3.6	4.3	
PIMCO Income Fund	3.0	1.3	3.8	3.6	-	-	-	3.7	<i>8/17</i>
Bloomberg Barclays US Aggregate Index	0.6	6.8	7.0	5.2	-	-	-	4.9	
PIMCO Investment Grade Corp. Bond	2.0	4.1	5.5	5.7	6.2	5.8	5.8	7.8	<i>4/09</i>
Bloomberg Barclays Credit A Index	1.1	7.7	8.5	6.3	5.7	5.3	5.0	6.6	
PIMCO Real Return Fund	3.4	9.9	10.9	5.8	4.8	3.3	-	1.9	<i>11/12</i>
Bloomberg Barclays U.S. TIPS Index	3.0	9.2	10.1	5.8	4.6	3.4	-	2.0	
iShares Short Treasury Bond ETF	0.0	0.8	1.3	1.7	-	-	-	1.7	<i>8/17</i>
ICE BofA U.S. Treasury Short Term Index	0.0	0.7	1.2	1.7	-	-	-	1.7	

Community Foundation of Greater Greensboro

Summary of Investment Performance

Report for Periods Ending September 30, 2020

	Annualized							Since Inception	Date
	Qtr	YTD	1Yr	3Yr	5Yr	7Yr	10Yr		
<u>Diversifying Strategies Composite</u>	4.4%	0.3%	2.9%	2.9%	3.2%	3.3%	4.2%	3.7%	<i>12/04</i>
HFRI Fund of Funds Index	4.1	2.4	5.6	2.8	3.1	3.0	2.9	2.8	
<u>Ironwood International, Ltd.</u>	4.1	6.9	9.6	6.0	5.2	5.6	6.3	4.7	<i>12/04</i>
HFRI Fund of Funds Index	4.1	2.4	5.6	2.8	3.1	3.0	2.9	2.8	
Bloomberg Barclays US Aggregate Index	0.6	6.8	7.0	5.2	4.2	4.0	3.6	4.4	
<u>Lighthouse Partners Diversified Fund, Ltd.</u>	3.5	-8.7	-6.1	-0.8	-	-	-	0.8	<i>7/16</i>
HFRI FOF: Conservative Index	2.3	0.3	1.9	2.2	-	-	-	2.9	
Bloomberg Barclays US Aggregate Index	0.6	6.8	7.0	5.2	-	-	-	3.7	
<u>iShares U.S. Preferred Stock Index</u>	6.9	0.4	2.3	3.4	-	-	-	3.9	<i>2/17</i>
Bloomberg Barclays US Aggregate Index	0.6	6.8	7.0	5.2	-	-	-	5.0	
<u>Real Assets Composite</u>	0.6	-26.4	-27.2	-9.2	-3.9	-6.5	-	-5.6	<i>6/11</i>
Consumer Price Index	1.2	0.7	1.6	1.9	1.9	1.6	-	1.6	
<u>Public Real Estate Composite</u>	2.9	-17.1	-15.6	-0.1	2.0	2.5	-	2.5	<i>11/12</i>
FTSE EPRA/NAREIT Developed Index	2.1	-19.7	-18.3	-1.5	2.0	2.7	-	3.4	
<u>Seaport Global Property Securities Fund</u>	2.9	-17.1	-15.6	-0.1	-	-	-	1.3	<i>5/16</i>
FTSE EPRA/NAREIT Developed Index	2.1	-19.7	-18.3	-1.5	-	-	-	0.2	
S&P Developed BMI Property Index	2.8	-17.6	-16.1	-1.1	-	-	-	0.8	
<u>Private Real Estate</u>									
Bell Apartment Fund VII	0.0	0.0	0.0	-	-	-	-	0.0	<i>8/19</i>
<u>Natural Resources Composite</u>	-0.3	-30.3	-31.7	-12.4	-6.2	-11.4	-	-9.8	<i>6/11</i>
CPI	1.2	0.7	1.6	1.9	1.9	1.6	-	1.6	
Harvest MLP Income Fund II	-0.5	-30.7	-31.7	-12.4	-6.0	-	-	-11.5	<i>5/15</i>
Alerian MLP Index	-16.3	-46.2	-48.4	-20.8	-11.6	-	-	-16.3	
<u>Private Natural Resources</u>									
MAP 2018	0.0	4.5	10.7	-	-	-	-	23.1	<i>11/18</i>
Ridgewood Water & Strategic Infrastructure	0.0	-1.3	-4.0	-	-	-	-	-5.7	<i>6/19</i>
<u>Social Impact/ESG Pool</u>	6.5	5.8	13.3	-	-	-	-	7.1	<i>1/18</i>
Balanced Index ⁵	5.7	3.0	9.5	-	-	-	-	5.0	

Community Foundation of Greater Greensboro

Summary of Investment Performance

Report for Periods Ending September 30, 2020

Footnotes:

* Performance returns are net of investment management fees.

* Calculated returns may differ from the manager's due to differences in security pricing and/or cash flows. Also, cash held for distribution purposes and related earnings are not reflected on this report.

* Manager and index data represent the most current available at the time of report publication.

* Hedge fund and private capital manager market values and rates of return may be based on estimates and may be revised until completion of an annual audit by the manager.

* For managers and indices that report returns on a lag, 0.0% is utilized for the most recent time period until the actual return data are reported.

* The fiscal year ends in December.

¹ Target Weighted Index (Benchmark) is currently comprised of: 20.0% S&P 500 Index, 5.0% Russell Midcap Index, 10.0% Russell 2000 Index, 15.0% MSCI EAFE Index, 5.0% MSCI Small Cap EAFE Index, 7.5% MSCI Emerging Markets Index, 12.5% Bloomberg Barclays US Aggregate Index, 2.5% Bloomberg Barclays U.S. TIPS Index, 12.5% HFRI Fund of Funds Index, 5.0% Alerian MLP Index, and 5.0% S&P Developed BMI Property Index. Please see Appendix for benchmark history.

² Market Weighted Index (Benchmark) is currently comprised of: 100.0% CFGG Market Weighted Index. Please see Appendix for benchmark history.

³ Balanced Index II is currently comprised of: 50.0% S&P 500 Index, 16.7% Spliced Vanguard Mid Cap Fund Index, and 33.3% Russell 2000 Index. Please see Appendix for benchmark history.

⁴ Blended Index is currently comprised of: 100.0% MSCI AC World Index ex-U.S.. Please see Appendix for benchmark history.

⁵ Balanced Index is comprised of: 40.0% S&P 500 Index, 30.0% MSCI AC World Index ex-U.S., and 30.0% Bloomberg Barclays US Aggregate Index.

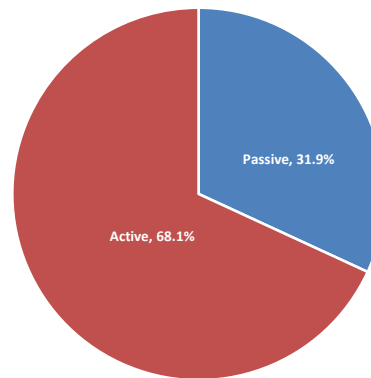
^A Private Equity returns are included in the composite returns. For individual private equity managers, returns are also calculated utilizing the internal rate of return (IRR) and are included on a following page.

Community Foundation of Greater Greensboro
Schedule of Asset and Style Allocation
Report for Period Ending September 30, 2020

Long Term Pool

	Large Cap Equity	Mid Cap Equity	Small Cap Equity	Int'l Equity	Int'l Small Cap	Emerging Markets	Hedged Equity	Private Equity	Inv. Grade Fixed Income	TIPS	High Yield/ Credit	Real Estate	Natural Resources	Diversifying Strategies	Cash	Percent of Total
iShares S&P 100 Index	100.0%	-	-	-	-	-	-	-	-	-	-	-	-	-	-	6.8%
Vanguard Institutional Index Fund	100.0%	-	-	-	-	-	-	-	-	-	-	-	-	-	-	10.0%
Vanguard Mid Cap Index Fund	-	100.0%	-	-	-	-	-	-	-	-	-	-	-	-	-	5.5%
Harbor Small Cap Growth Fund	-	-	100.0%	-	-	-	-	-	-	-	-	-	-	-	-	6.0%
DFA Small Cap Value Fund	-	-	100.0%	-	-	-	-	-	-	-	-	-	-	-	-	4.4%
Europacific Growth Fund	-	-	-	100.0%	-	-	-	-	-	-	-	-	-	-	-	6.5%
Dodge & Cox International Stock	-	-	-	100.0%	-	-	-	-	-	-	-	-	-	-	-	4.7%
Tweedy Brown Global Value Fund	-	-	-	100.0%	-	-	-	-	-	-	-	-	-	-	-	3.5%
DFA International Small Cap Value	-	-	-	-	100.0%	-	-	-	-	-	-	-	-	-	-	1.7%
Brown International Small Company	-	-	-	-	100.0%	-	-	-	-	-	-	-	-	-	-	1.7%
DFA Emerging Markets Value	-	-	-	-	-	100.0%	-	-	-	-	-	-	-	-	-	3.2%
Van Eck Emerging Markets	-	-	-	-	-	100.0%	-	-	-	-	-	-	-	-	-	3.3%
ABS Global Offshore	-	-	-	-	-	-	100.0%	-	-	-	-	-	-	-	-	2.0%
Pointer Management LLC	-	-	-	-	-	-	100.0%	-	-	-	-	-	-	-	-	3.7%
RCP Advisors IX	-	-	-	-	-	-	-	100.0%	-	-	-	-	-	-	-	0.8%
Dolan McEniry	-	-	-	-	-	-	-	-	100.0%	-	-	-	-	-	-	1.8%
Dodge & Cox Income	-	-	-	-	-	-	-	-	100.0%	-	-	-	-	-	-	1.8%
Loomis Sayles Bond Fund	-	-	-	-	-	-	-	-	-	-	100.0%	-	-	-	-	2.0%
PIMCO Income Fund	-	-	-	-	-	-	-	-	100.0%	-	-	-	-	-	-	0.9%
DoubleLine Total Return	-	-	-	-	-	-	-	-	100.0%	-	-	-	-	-	-	2.1%
PIMCO Investment Grade Corp. Bond	-	-	-	-	-	-	-	-	100.0%	-	-	-	-	-	-	1.9%
PIMCO Real Return Fund	-	-	-	-	-	-	-	-	-	100.0%	-	-	-	-	-	2.7%
iShares Short Term Treasury Bond	-	-	-	-	-	-	-	-	100.0%	-	-	-	-	-	-	6.5%
Ironwood International, Ltd.	-	-	-	-	-	-	-	-	-	-	-	-	-	-	-	5.6%
Lighthouse Partners Diversified Fund, Ltd.	-	-	-	-	-	-	-	-	-	-	-	-	-	100.0%	-	3.5%
iShares US Preferred Stock Index	-	-	-	-	-	-	-	-	-	-	-	-	-	100.0%	-	2.1%
Seaport Global Property Securities Fund	-	-	-	-	-	-	-	-	-	-	-	100.0%	-	-	-	1.7%
Bell Apartment Fund VII	-	-	-	-	-	-	-	-	-	-	-	100.0%	-	-	-	0.2%
Harvest MLP Income II	-	-	-	-	-	-	-	-	-	-	-	-	100.0%	-	-	0.0%
MAP RE 2018, L.P.	-	-	-	-	-	-	-	-	-	-	-	-	100.0%	-	-	0.6%
Ridgewood Water & Strategic Infrastructure	-	-	-	-	-	-	-	-	-	-	-	-	100.0%	-	-	0.2%
Social Impact / ESG Pool	31.8%	6.2%	-	28.6%	-	-	-	-	29.2%	-	-	-	4.2%	-	-	2.6%
Percent of Total	17.6%	5.7%	10.4%	15.4%	3.4%	6.5%	5.7%	0.8%	15.9%	2.7%	2.0%	1.9%	1.0%	11.0%	0.0%	
Target	15.0%	5.0%	10.0%	15.0%	5.0%	7.5%	5.0%	5.0%	7.5%	2.5%	5.0%	5.0%	5.0%	7.5%	0.0%	
Target Range	10.0%- 30.0%	0.0%- 10.0%	5.0%- 15.0%	10.0%- 20.0%	0.0%- 10.0%	0.0%- 15.0%	0.0%- 10.0%	0.0%- 10.0%	0.0%- 20.0%	0.0%- 10.0%	0.0%- 10.0%	0.0%- 10.0%	0.0%- 10.0%	0.0%- 20.0%	0.0%- 10.0%	

Passive vs. Active Allocations



Community Foundation of Greater Greensboro

Benchmark Composition Summary

Target Weighted Index (Benchmark)

<u>Since Inception</u>	<u>Weight</u>
S&P 500 Index	48.00%
MSCI EAFE Index	12.00%
Bloomberg Barclays US Aggregate Index	40.00%

<u>July 31, 2003</u>	<u>Weight</u>
S&P 500 Index	50.00%
Russell 2000 Index	10.00%
MSCI EAFE Index	10.00%
Bloomberg Barclays US Aggregate Index	30.00%

<u>December 31, 2004</u>	<u>Weight</u>
S&P 500 Index	50.00%
Russell 2000 Index	10.00%
MSCI EAFE Index	10.00%
Bloomberg Barclays US Aggregate Index	20.00%
8% Annual Return	10.00%

<u>June 30, 2005</u>	<u>Weight</u>
S&P 500 Index	30.00%
Russell 2000 Index	17.50%
MSCI EAFE Index	12.50%
MSCI Small Cap EAFE Index	5.00%
MSCI Emerging Markets Index	5.00%
Bloomberg Barclays US Aggregate Index	30.00%

<u>November 30, 2012</u>	<u>Weight</u>
S&P 500 Index	20.00%
Russell Midcap Index	5.00%
Russell 2000 Index	10.00%
MSCI EAFE Index	15.00%
MSCI Small Cap EAFE Index	5.00%
MSCI Emerging Markets Index	7.50%
Bloomberg Barclays US Aggregate Index	12.50%
Bloomberg Barclays U.S. TIPS Index	2.50%
HFRI Fund of Funds Index	12.50%
Bloomberg Commodity Index	5.00%
S&P Developed BMI Property Index	5.00%

<u>January 31, 2015</u>	<u>Weight</u>
S&P 500 Index	20.00%
Russell Midcap Index	5.00%
Russell 2000 Index	10.00%
MSCI EAFE Index	15.00%
MSCI Small Cap EAFE Index	5.00%
MSCI Emerging Markets Index	7.50%
Bloomberg Barclays US Aggregate Index	12.50%
Bloomberg Barclays U.S. TIPS Index	2.50%
HFRI Fund of Funds Index	12.50%
Alerian MLP Index	5.00%
S&P Developed BMI Property Index	5.00%

Market Weighted Index (Benchmark)

<u>Since Inception</u>	<u>Weight</u>
S&P 500 Index	48.00%
MSCI EAFE Index	12.00%
Bloomberg Barclays US Aggregate Index	40.00%

<u>July 31, 2003</u>	<u>Weight</u>
S&P 500 Index	50.00%
Russell 2000 Index	10.00%
MSCI EAFE Index	10.00%
Bloomberg Barclays US Aggregate Index	30.00%

<u>December 31, 2004</u>	<u>Weight</u>
S&P 500 Index	50.00%
Russell 2000 Index	10.00%
MSCI EAFE Index	10.00%
Bloomberg Barclays US Aggregate Index	20.00%
8% Annual Return	10.00%

<u>June 30, 2005</u>	<u>Weight</u>
S&P 500 Index	30.00%
Russell 2000 Index	17.50%
MSCI EAFE Index	12.50%
MSCI Small Cap EAFE Index	5.00%
MSCI Emerging Markets Index	5.00%
Bloomberg Barclays US Aggregate Index	30.00%

<u>November 30, 2012</u>	<u>Weight</u>
S&P 500 Index	20.00%
Russell Midcap Index	5.00%
Russell 2000 Index	10.00%
MSCI EAFE Index	15.00%
MSCI Small Cap EAFE Index	5.00%
MSCI Emerging Markets Index	7.50%
Bloomberg Barclays US Aggregate Index	12.50%
Bloomberg Barclays U.S. TIPS Index	2.50%
HFRI Fund of Funds Index	12.50%
Bloomberg Commodity Index	5.00%
S&P Developed BMI Property Index	5.00%

<u>June 30, 2013</u>	<u>Weight</u>
CFGG Market Weighted Index	100.00%

Community Foundation of Greater Greensboro

Benchmark Composition Summary

Balanced Index II

<u>Since Inception</u>	<u>Weight</u>
------------------------	---------------

S&P 500 Index	100.00%
---------------	---------

<u>July 31, 2003</u>	<u>Weight</u>
----------------------	---------------

S&P 500 Index	83.30%
---------------	--------

Russell 2000 Index	16.70%
--------------------	--------

<u>June 30, 2005</u>	<u>Weight</u>
----------------------	---------------

S&P 500 Index	66.00%
---------------	--------

Russell 2000 Index	34.00%
--------------------	--------

<u>November 30, 2012</u>	<u>Weight</u>
--------------------------	---------------

S&P 500 Index	50.00%
---------------	--------

Spliced Vanguard Mid Cap Fund Index	16.70%
-------------------------------------	--------

Russell 2000 Index	33.30%
--------------------	--------

Blended Index

<u>Since Inception</u>	<u>Weight</u>
------------------------	---------------

MSCI EAFE Index	100.00%
-----------------	---------

<u>June 30, 2005</u>	<u>Weight</u>
----------------------	---------------

MSCI AC World Index ex-U.S.	100.00%
-----------------------------	---------